



FACTS ABOUT NEW YORK CITY

GEOGRAPHY

Community Districts	59
Square Miles	304.8
Population Density ¹ persons per square mile	27,578
Highest Population Density ² ZIP Code 10001	143,685
Park Acreage	29,838
Miles of Shoreline	520
Miles of Street	6,000+
Number of Bridges	2,027

DEMOGRAPHY

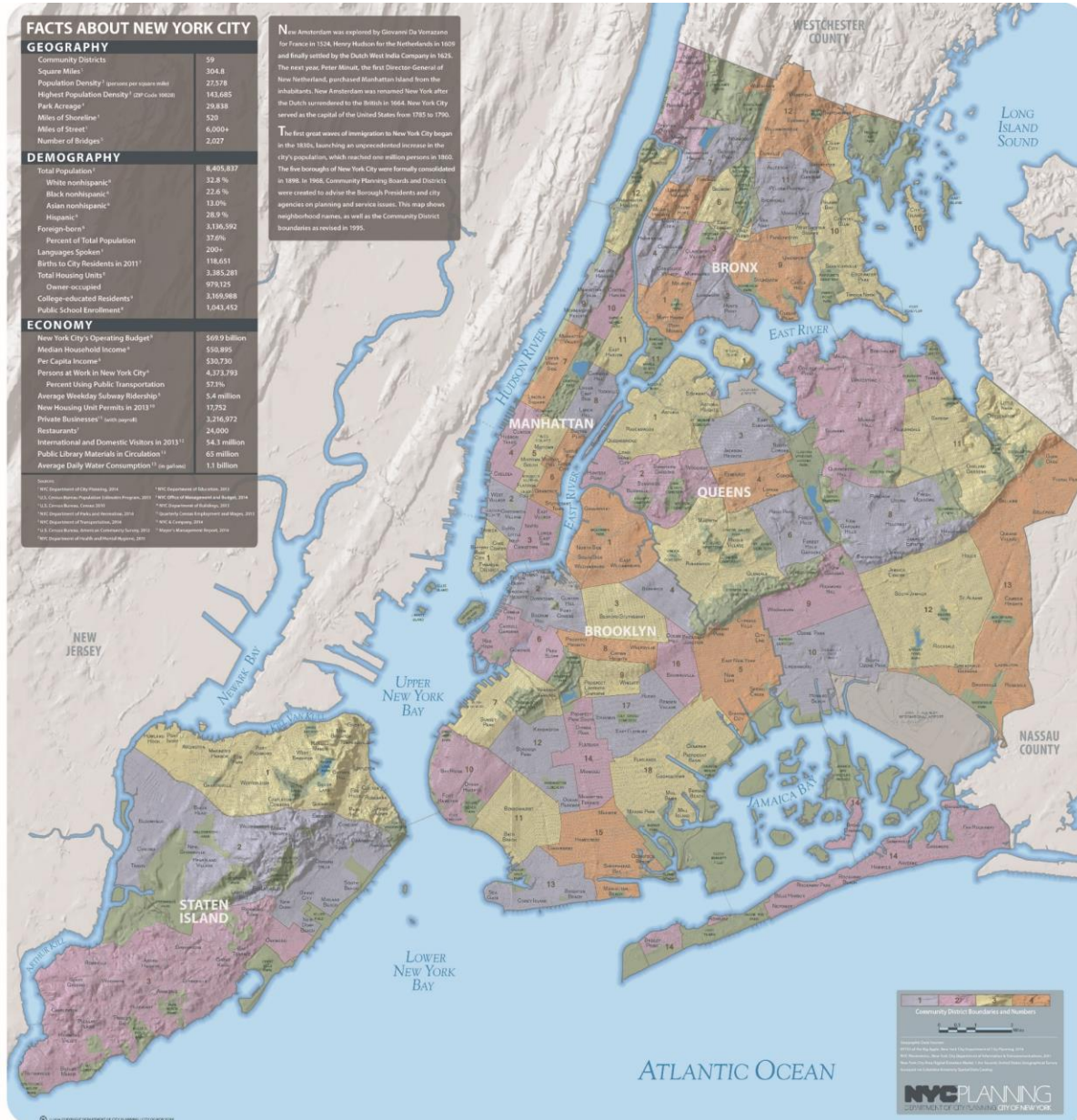
Total Population ³	8,405,837
White nonhispanic ⁴	32.8%
Black nonhispanic ⁴	22.8%
Asian nonhispanic ⁴	13.0%
Hispanic ⁴	28.9%
Foreign-born ⁴	3,136,592
Percent of Total Population	37.0%
Language Spoken ⁵	200+
Baths to City Residents in 2011 ⁶	118,651
Total Housing Units ⁷	3,385,281
Owner-occupied	976,125
College-educated Residents ⁸	3,169,988
Public School Enrollment ⁹	1,043,432

ECONOMY

New York City's Operating Budget ¹⁰	\$69.9 billion
Median Household Income ¹¹	\$50,895
Per Capita Income ¹²	\$30,730
Persons at Work in New York City ¹³	4,373,793
Percent Using Public Transportation	57%
Average Weekly Subway Ridership ¹⁴	5.4 million
New Housing Unit Permits in 2013 ¹⁵	17,252
Private Businesses ¹⁶ units opened	3,216,972
Restaurants ¹⁷	24,000
International and Domestic Visitors in 2013 ¹⁸	54.3 million
Public Library Materials in Circulation ¹⁹	65 million
Average Daily Water Consumption ²⁰ (in gallons)	1.1 billion

Sources:
¹NYC Department of City Planning, 2014
²U.S. Census Bureau, Census 2010
³U.S. Census Bureau, Census 2010
⁴U.S. Census Bureau, Census 2010
⁵NYC Department of City Planning, 2014
⁶NYC Department of City Planning, 2014
⁷U.S. Census Bureau, American Community Survey, 2012
⁸NYC Department of City Planning, 2014
⁹NYC Department of Education, 2013
¹⁰NYC Office of Management and Budget, 2014
¹¹NYC Department of City Planning, 2014
¹²NYC Department of City Planning, 2014
¹³NYC Department of City Planning, 2014
¹⁴MTA, 2014
¹⁵NYC Department of City Planning, 2014
¹⁶NYC Department of City Planning, 2014
¹⁷NYC Department of City Planning, 2014
¹⁸NYC Department of City Planning, 2014
¹⁹NYC Department of City Planning, 2014
²⁰NYC Department of City Planning, 2014

New Amsterdam was explored by Giovanni Da Verrazzano for France in 1524, Henry Hudson for the Netherlands in 1609 and finally settled by the Dutch West India Company in 1625. The next year, Peter Minuit, the first Director-General of New Netherland, purchased Manhattan Island from the inhabitants. New Amsterdam was renamed New York after the Dutch surrendered to the British in 1664. New York City served as the capital of the United States from 1785 to 1790. The first great waves of immigration to New York City began in the 1850s, launching an unprecedented increase in the city's population, which reached one million persons in 1860. The five boroughs of New York City were formally consolidated in 1898. In 1968, Community Planning Boards and Districts were created to advise the Borough Presidents and city agencies on planning and service issues. This map shows neighborhood names as well as the Community District boundaries as revised in 1995.



**United States[®]
Census
2020**

www.nyc.gov/census



Zoning Handbook

2018 Edition

<https://zr.planning.nyc.gov/>

East New York



Downtown Far Rockaway



East Harlem



Jerome Avenue

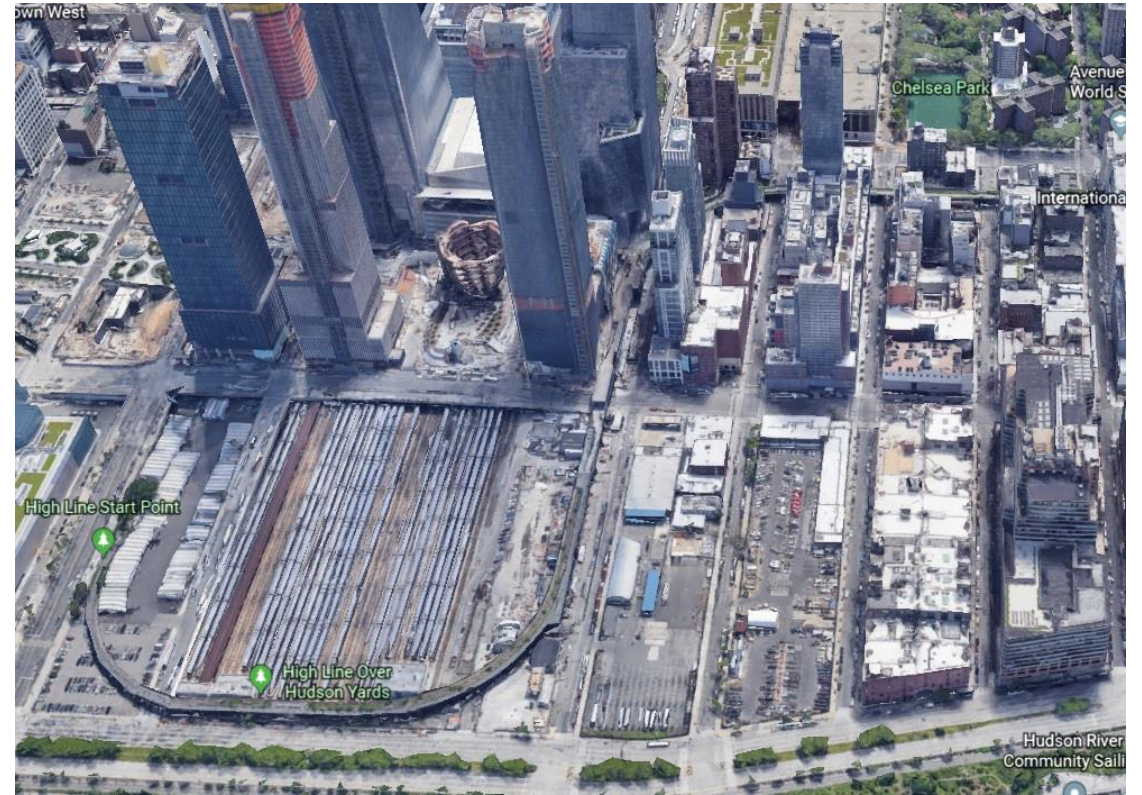


Inwood

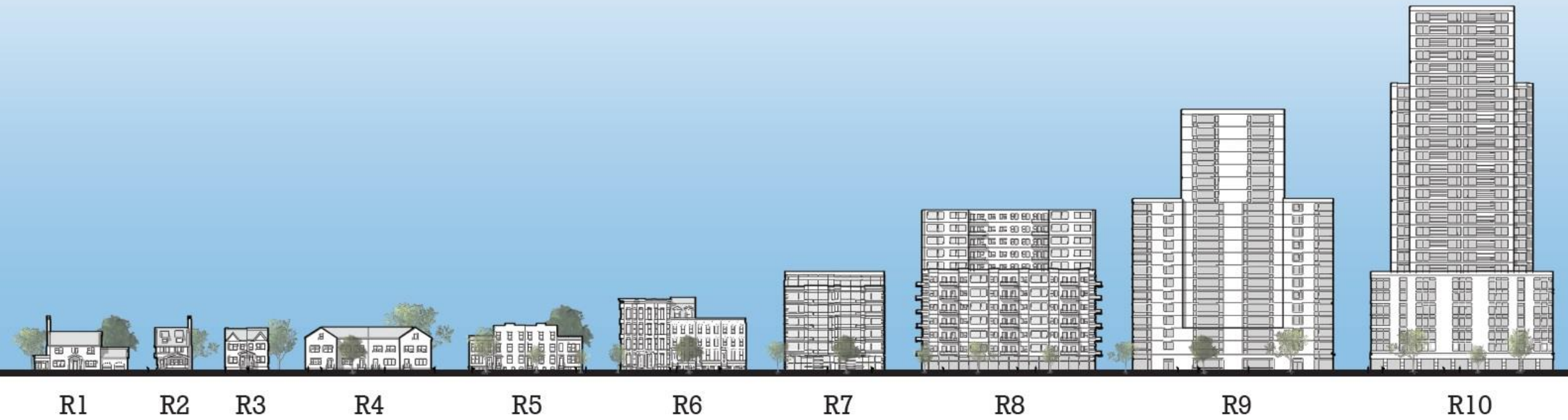


Bay Street Corridor





Block 675



R1

R2

R3

R4

R5

R6

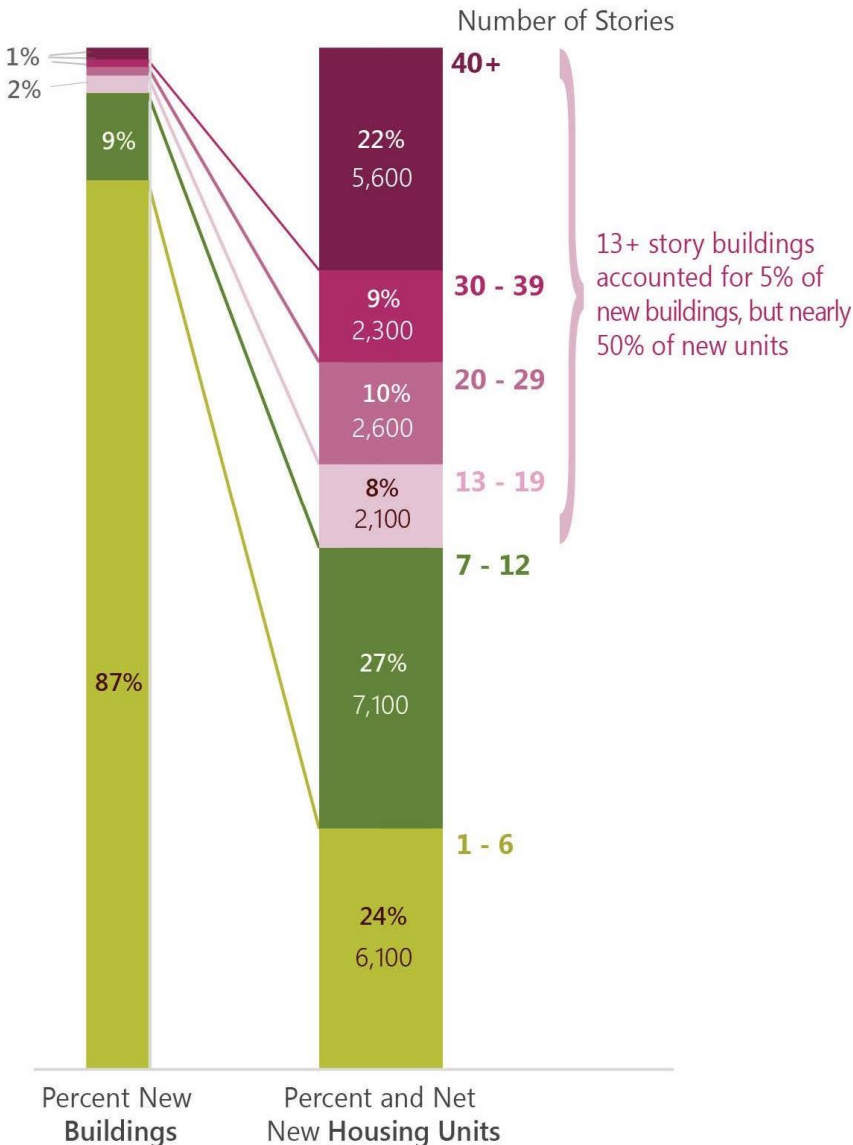
R7

R8

R9

R10

New Housing Units and Buildings in 2017 by Building Height









Greater East Midtown Densities + Transit Zones

NYC
PLANNING



New York Works

Creating Good Jobs



The City of New York
Mayor Bill de Blasio

Alicia Glen
Deputy Mayor for Housing and
Economic Development









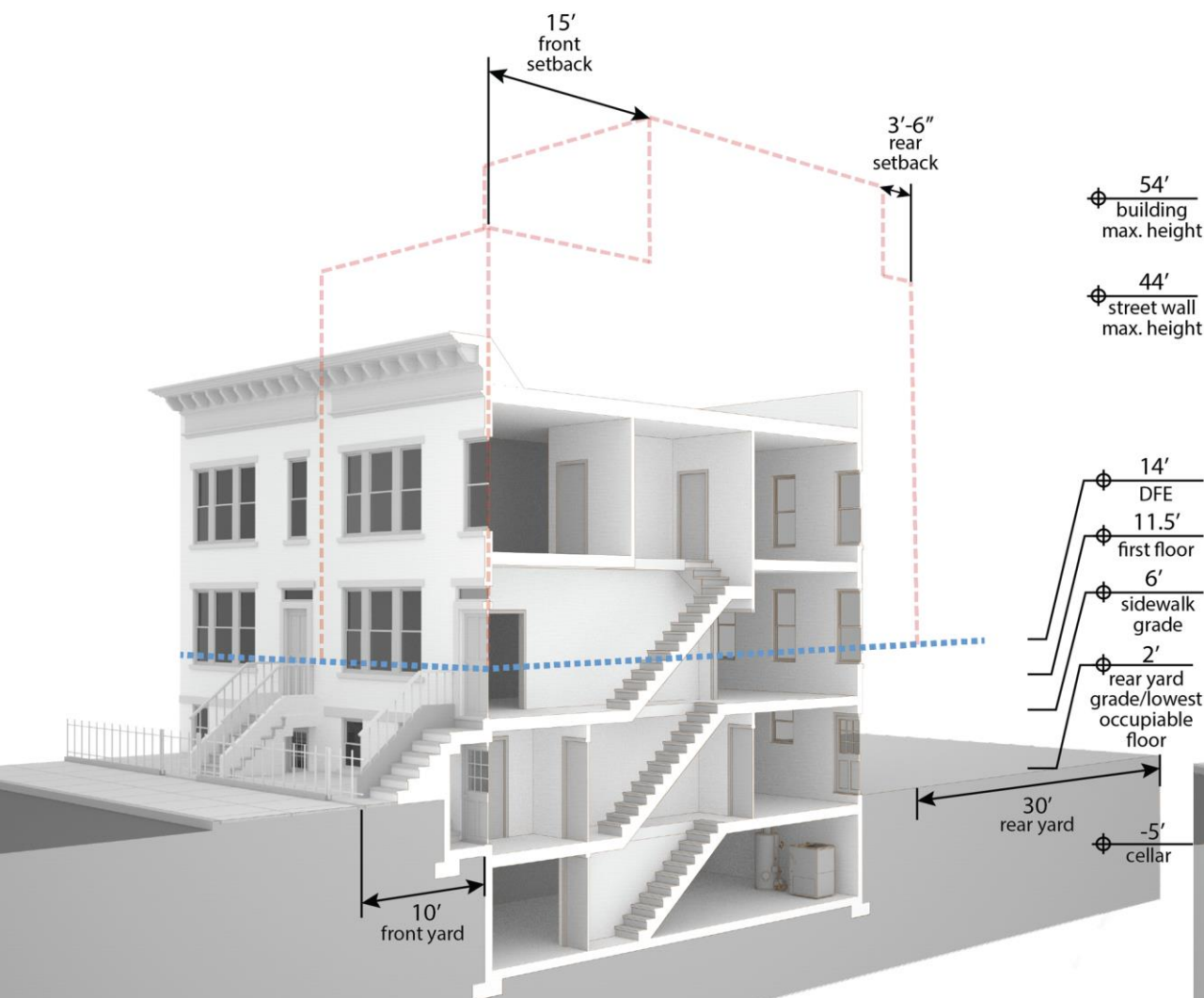
An aerial illustration of a coastal city. A blue rectangular box with a dashed border highlights a central urban area. The city features a mix of building types, including multi-story commercial buildings, mid-rise residential blocks, and smaller houses. A road with cars and a waterfront with a beach are also visible. Blue curved lines connect the highlighted area to two inset images: one at the top right showing a street view and another at the bottom right showing a waterfront residential development.

Zoning for Coastal Flood Resiliency

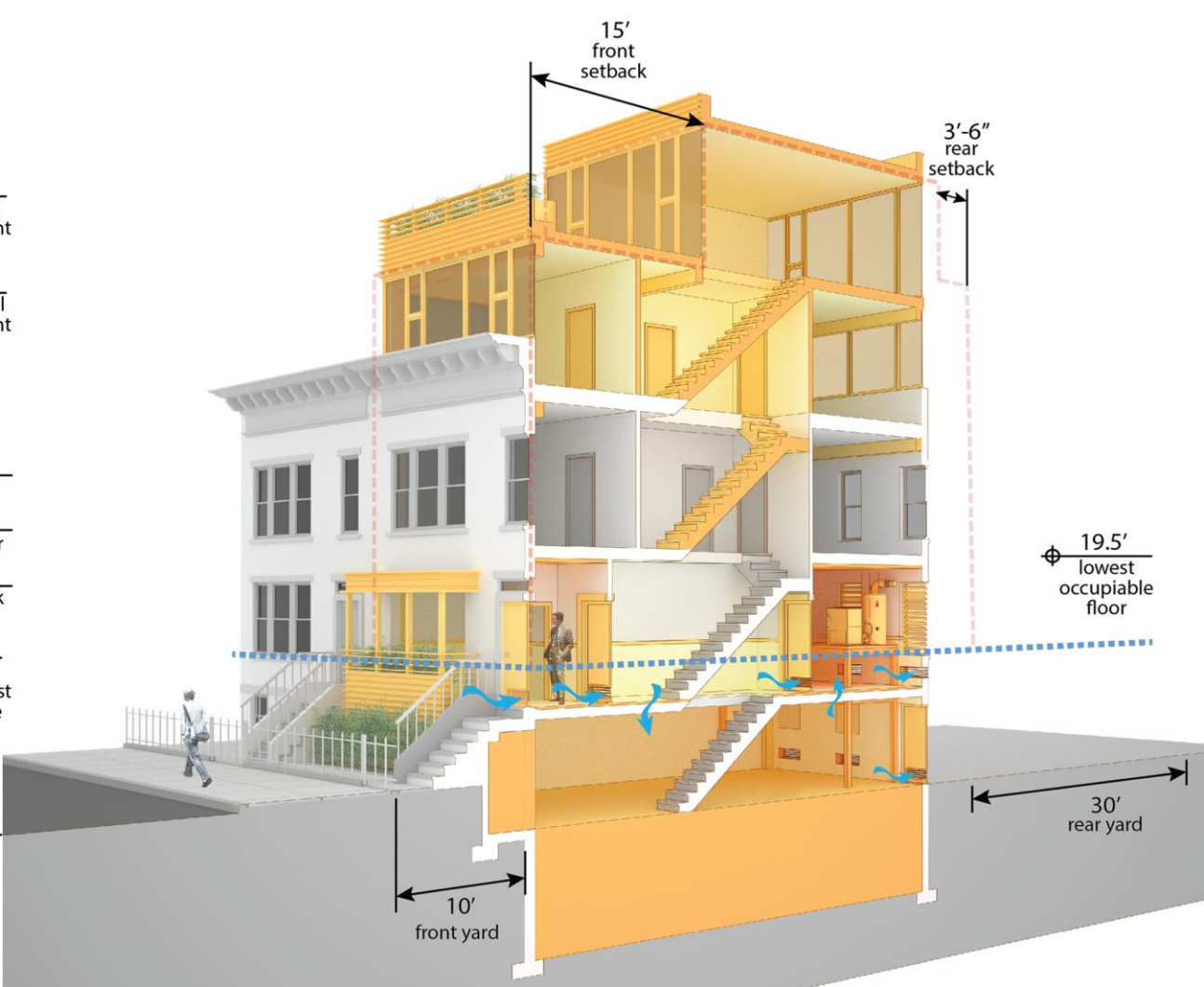
Planning for Resilient Neighborhoods

RESIDENTIAL RESILIENT BUILDING

Before



After



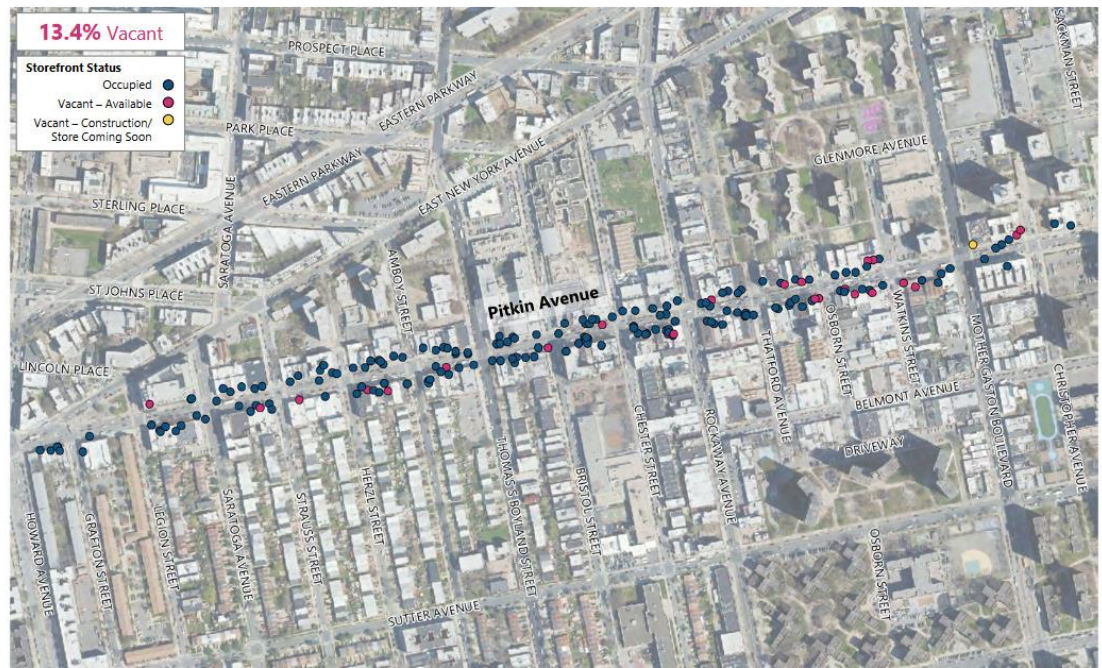


ASSESSING STOREFRONT VACANCY IN NYC

24 Neighborhood Case Studies

Brownsville, Brooklyn

Pitkin Avenue



SoHo / NoHo, Manhattan

Broadway, Broome Street, Lafayette Street, Mulberry Street, Prince Street, Spring Street, West Broadway, Houston Street





Photo credit: Federica Valabrega/Bloomberg

THE GEOGRAPHY OF JOBS

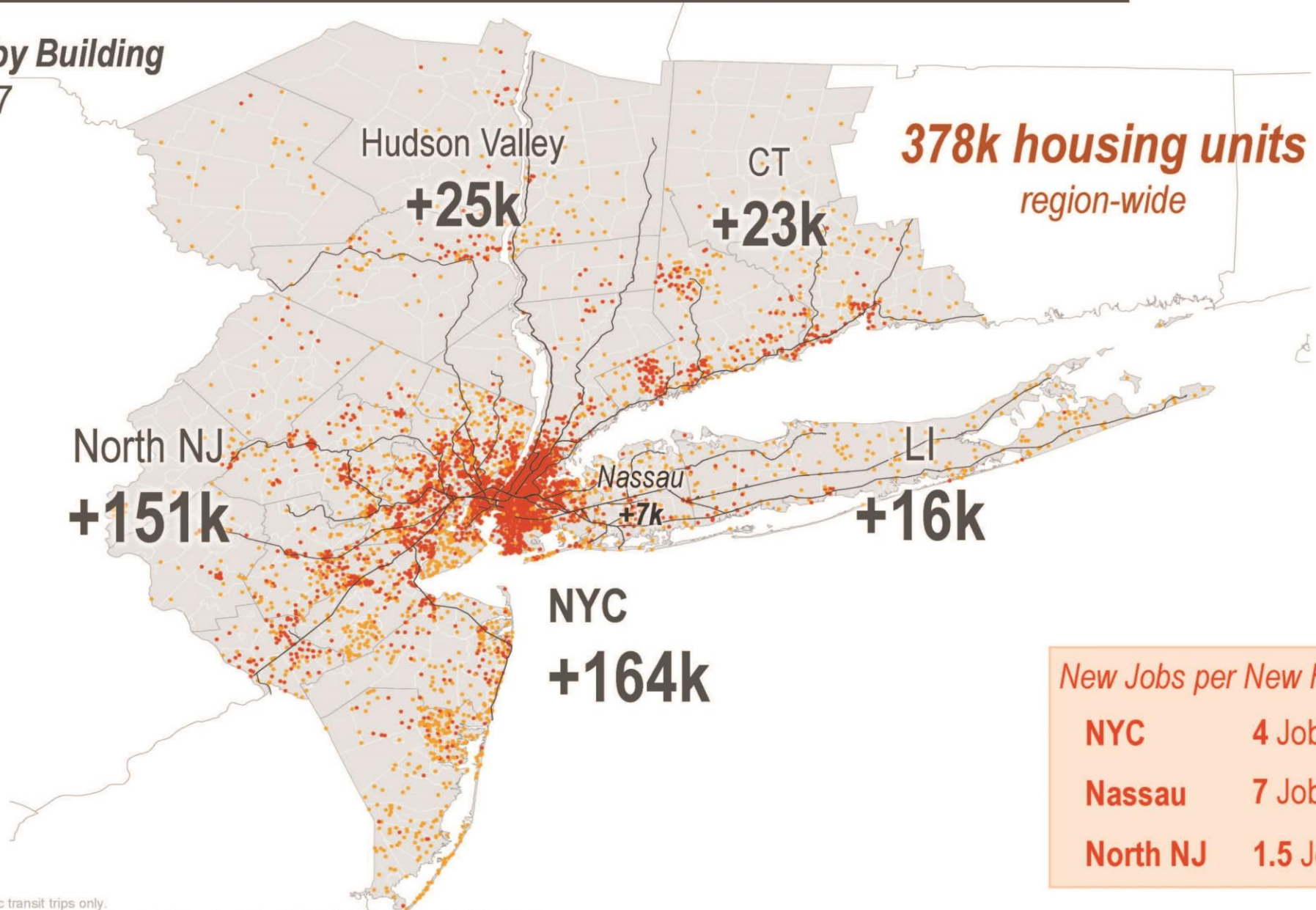
NYC Metro Region Economic Snapshot

NYC
PLANNING

New housing development mostly in NYC & North NJ

New Housing Units by Building Permits, 2010 to 2017

- 1 Dot = 50 units
 - in 1-2 Unit Building
 - in 3+ Unit Building
- Commuter Rail



2010 – 2017

New Jobs per New Housing Unit

NYC	4 Jobs /Unit
Nassau	7 Jobs /Unit
North NJ	1.5 Jobs /Unit

The Ins and Outs of NYC Commuting

An examination of recent trends and characteristics of commuter exchanges between NYC and the surrounding Metro Region

FACTS ABOUT NEW YORK CITY

GEOGRAPHY

Community Districts	59
Square Miles ¹	304.8
Population Density ¹ (persons per square mile)	27,578
Highest Population Density ¹ (ZIP Code 10018)	143,685
Park Acreage ²	28,838
Miles of Shoreline ³	520
Miles of Street ⁴	6,000+
Number of Bridges ⁵	2,027

DEMOGRAPHY

Total Population ¹	8,495,837
White nonhispanic ⁶	32.8 %
Black nonhispanic ⁶	22.6 %
Asian nonhispanic ⁶	13.0%
Hispanic ⁶	26.9 %
Foreign-born ⁶	3,136,592
Percent of Total Population	37.6%
Languages Spoken ⁷	200+
Births to City Residents in 2011 ⁸	118,651
Total Housing Units ⁹	3,345,281
Owner-occupied	979,125
College-educated Residents ¹⁰	3,169,988
Public School Enrollment ¹¹	1,043,452

ECONOMY

New York City's Operating Budget ¹²	\$69.9 billion
Median Household Income ¹³	\$50,895
Per Capita Income ¹⁴	\$30,739
Persons at Work in New York City ¹⁵	4,373,793
Percent Using Public Transportation	57.1%
Average Weekday Subway Ridership ¹⁶	5.4 million
New Housing Unit Permits in 2013 ¹⁷	17,752
Private Businesses ¹⁸ (non-payroll)	3,116,972
Restaurants ¹⁹	24,009
International and Domestic Visitors in 2013 ²⁰	54.3 million
Public Library Materials in Circulation ²¹	65 million
Average Daily Water Consumption ²² (in gallons)	1.1 billion

Sources:
¹NYC Department of City Planning, 2010. ¹²NYC Department of Finance, 2010.
²U.S. Census Bureau, Population Statistics Program, 2010. ¹³NYC Office of Management and Budget, 2014.
³U.S. Census Bureau, Census 2000. ¹⁴NYC Department of Finance, 2010.
⁴NYC Department of Public Works, 2014. ¹⁵NYC Department of Finance, 2010.
⁵NYC Department of Transportation, 2014. ¹⁶NYC Department of Transportation, 2014.
⁶U.S. Census Bureau, American Community Survey, 2010. ¹⁷NYC Department of Finance, 2014.
⁷NYC Department of City Planning, 2010. ¹⁸NYC Department of Finance, 2010.
⁸NYC Department of Health and Mental Hygiene, 2010. ¹⁹NYC Department of Finance, 2010.

New Amsterdam was explored by Giovanni Da Verrazano for France in 1524, Henry Hudson for the Netherlands in 1609 and finally settled by the Dutch West India Company in 1625.

The next year, Peter Minuit, the first Director-General of New Netherland, purchased Manhattan Island from the inhabitants. New Amsterdam was renamed New York after the Dutch surrendered to the British in 1664. New York City served as the capital of the United States from 1785 to 1790.

The first great waves of immigration to New York City began in the 1850s, launching an unprecedented increase in the city's population, which reached one million persons in 1860. The five boroughs of New York City were formally consolidated in 1898. In 1968, Community Planning Boards and Districts were created to advise the Borough Presidents and city agencies on planning and service issues. This map shows neighborhood names, as well as the Community District boundaries as revised in 1995.

