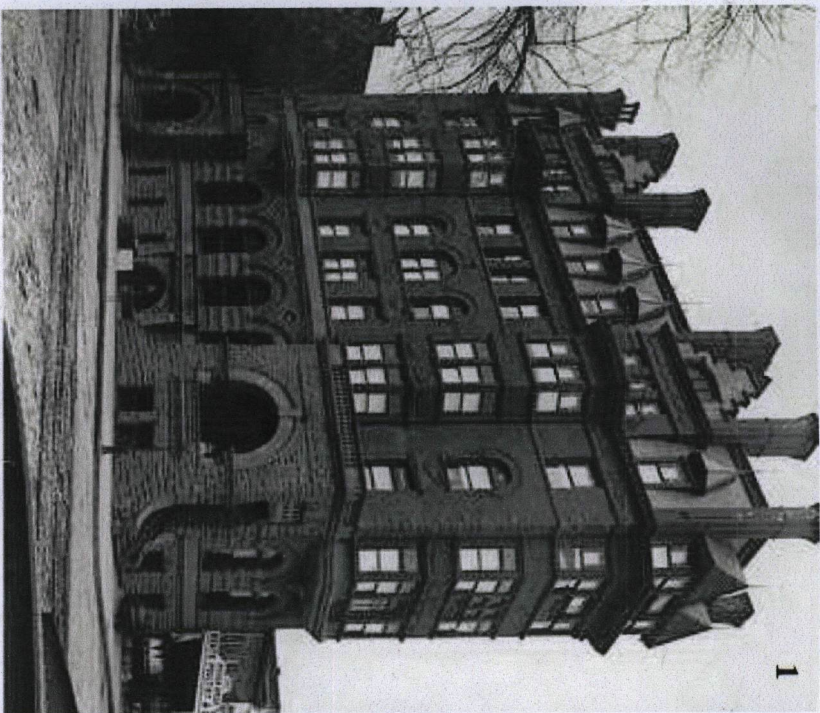
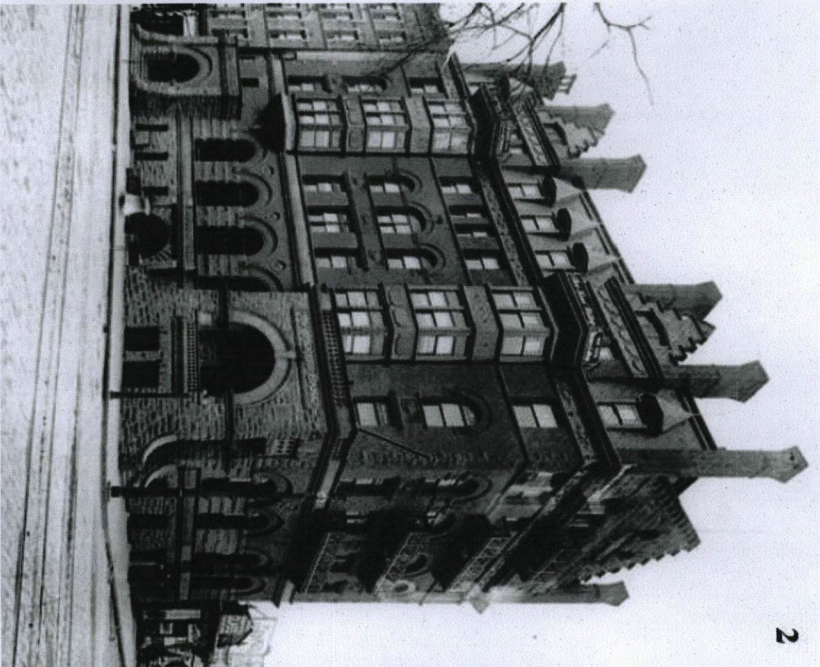


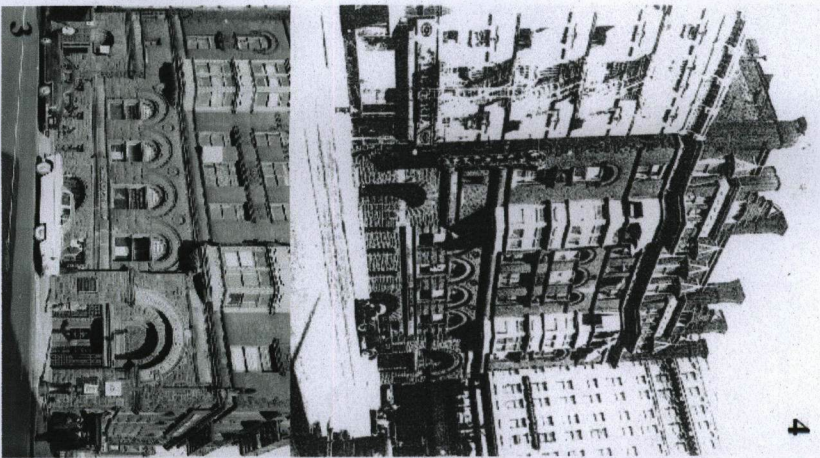
EVOLUTION OF THE MOUNT MORRIS BANK BUILDING



1



2



4



5

1. Mount Morris Bank (*American Architect and Building News* 13, April 28, 1883)

Architect: Lamb and Rich  
Date of Construction: 1883-84  
Owner: Mount Morris Safe Deposit Company  
Use: commercial at basement and first floor (tenants: MMSDC and the Mount Morris Bank); residential flats at second-fifth floors ("The Morris" apartments)

2. Mount Morris Bank (Photograph: New York Historical Society)

In 1889-90 Lamb and Rich enlarged the Mount Morris Bank building, employing the same Queen Anne and Romanesque Revival style as the earlier facade. The Park Avenue facade was doubled in height and the original projecting three-story oriel and roof dormers were removed. A columned entrance was introduced at the heavy sandstone base and two arched bays were added to the first floor. New upper-story windows echoed the design of the center openings of the main facade, with the further embellishment of wrought-iron balconies. A stepped gable extended the entire width of the Park Avenue facade and the tall brick chimney was rebuilt at the new northeast corner of the structure. Six windows separated by stone columns were added at the fifth floor with a pair of arched attic openings above.

3-4. Mount Morris Bank (Photograph: New York Public Library, History Division Microfilm Collection, P.L. Sperr, June 24, 1894)

The alteration of the facade by architect Frank Rosekrantz in 1912 entailed the reconstruction of the original entrances which led to the banking floor and the apartments' above. The projecting porches with their rough-cut sandstone walls and massive Richardsonian arches were cut back and rebuilt (using the reclaimed material) to within two feet of the property line. The stoops were removed allowing access to the building at street level but closing off the Park Avenue entrance.

In 1913 the Mount Morris Bank became a branch of the Corn Exchange Bank.

(\*At some date early in the century the residential floors were converted to offices.)

5. Mount Morris Bank (Photograph: Landmarks Preservation Commission archives)

A tax photograph in the Municipal Archives shows that the original roof was still intact in 1940. Sometime after that date the stepped gables on the 125th Street facade were reconfigured in a flat rectangular profile (although the arched triple windows of the sixth floor were retained). The tall chimneys flanking the gables were cut down and the angled hoods above the five metal dormers were also removed. Asphalt shingles replaced the slate roof tiles. On the Park Avenue facade a stone coping was constructed in place of the stepping of the gable. The decorative iron balconies were taken down (date uncertain) and a modern fire escape erected.

In 1964 the Corn Exchange Bank merged with Chemical Bank which continued to operate a branch at this site until the 1960s.

6. Mount Morris Bank (UNKNOWN)

In 1970s due to a Tax Foreclosure, the building passed to the city's property. It remained uninhabited to the present. In 1993 The Corn Exchange Bank Building was declared City Landmark. This picture shows the building condition in 1998.

7. Mount Morris Bank (In House Picture-DD, 22 July, 2002)

In 1990's, Due to a fire of unknown cause, the top two floors were demolished.

8. Mount Morris Bank (Online website: Joe Schumacher picture, 13 March 21, 2010)

In 2009, after a claim of structural instability, the Department of Buildings of the City of New York decided to demolish 4 floors of the remaining 6 stories. The pictures show the existing conditions of the building, where only the Celler and Ground floors remain.



6



7



8

ARTIMUS

37 WEST 61ST ST.  
NEW YORK, NY 10023  
TEL. 212.596.5100  
FAX 212.596.4009

RECONSTRUCTION/RESTORATION of the  
CORN EXCHANGE BANK BUILDING

81 EAST 125th STREET, New York, New York

DANOIS

Architects, P.C.  
22 Cortlandt Street, Suite 1703  
New York, NY 10007

1

Sept. 04, 2012





PARK AVENUE & 125TH ST VIEW



125TH STREET VIEW





PARK AVENUE VIEW

**LARTIMUS**  
17 WEST 67TH ST.  
NEW YORK, NY 10023  
TEL. 212-396-1100  
FAX. 212-396-4009

RECONSTRUCTION/RESTORATION of the  
CORN EXCHANGE BANK BUILDING  
81 EAST 125th STREET, New York, New York

**DANOIS**  
Architects, P.C.  
22 Cortlandt Street, Suite 1808  
New York, NY 10007

**11**  
Sept. 04, 2012



TRAIN TRACKS VIEW

**LARTIMUS**  
17 WEST 67TH ST.  
NEW YORK, NY 10023  
TEL. 212-396-1100  
FAX. 212-396-4009

RECONSTRUCTION/RESTORATION of the  
CORN EXCHANGE BANK BUILDING  
81 EAST 125th STREET, New York, New York

**DANOIS**  
Architects, P.C.  
22 Cortlandt Street, Suite 1808  
New York, NY 10007

**12**  
Sept. 04, 2012